

Handy Tips for your NDIS Plan

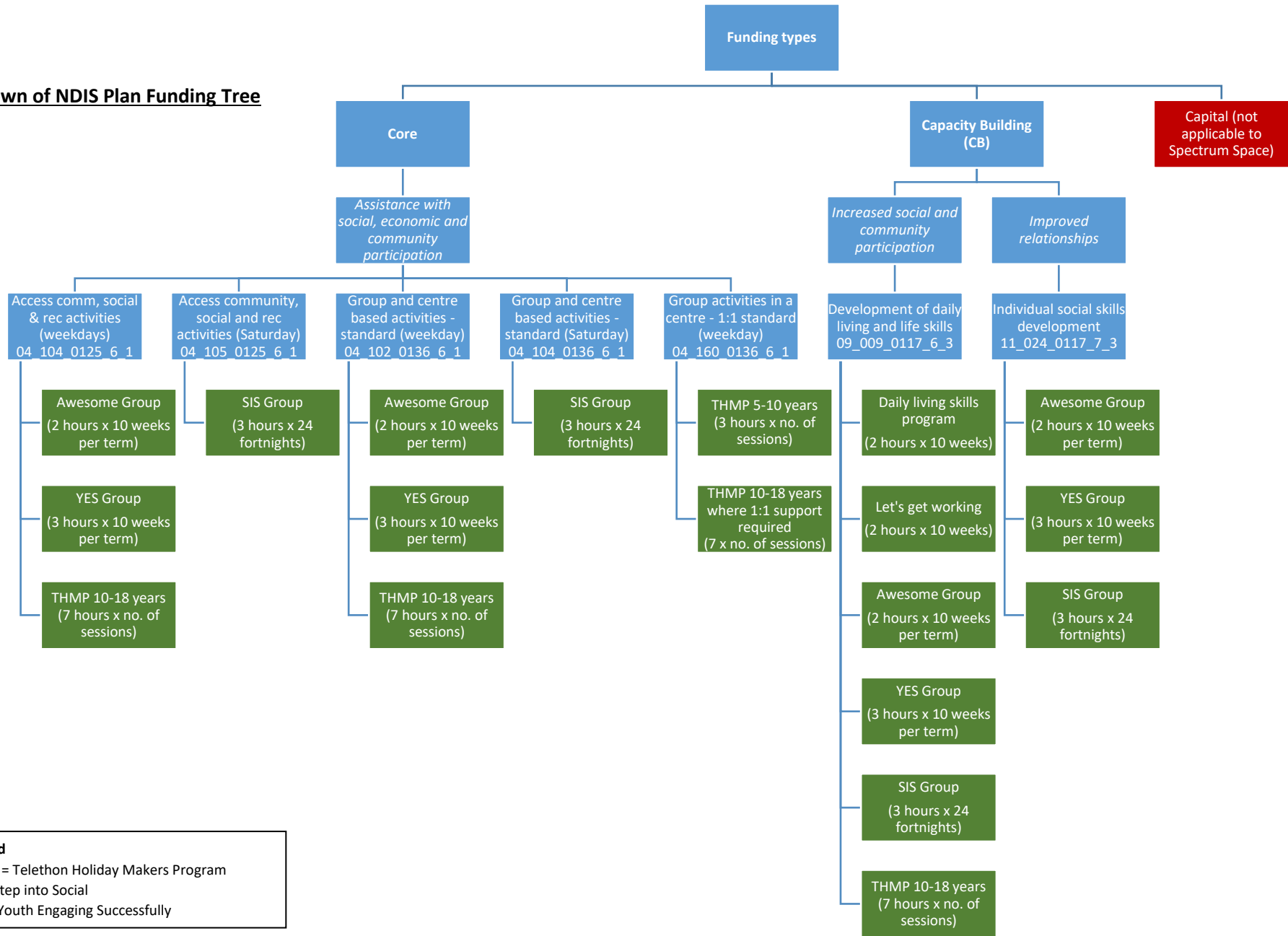
- Have an idea of what your goals, wants and needs are so they can become part of your plan.
- Please contact us on enrolments@spectrumspace.org.au or 9431 2111 to check the hourly rate for the relevant groups before meeting with the planner. This will give you an up to date quote prior to attending your planning session with your Local Area Coordinator so you have the correct hourly rate.
- The price per hour for each funding category can also be found on the [online NDIS Price Guide](#), by finding the unit reference number attached to each funding category (i.e. 10_016_0102_5_3 – refer to page 3).
- Spectrum Space currently does not have capacity to provide service from NDIA-Managed funding areas. If you have NDIA-Managed social funding and wish to access our services, you can contact the NDIS on 1800 800 110 and them know you wish to pay for our services outside of your current management. This is something the NDIS is familiar with and it should be a fairly straight forward process.
- Please supply Spectrum Space with a copy of your NDIS plan as soon as possible, regardless of if you are self-managing, or an plan manager is managing your plan. This smooths the process of setting up your details on our Clients record management System, issuing you with a service agreement as well as advising us of the participant's goals.
- The following tree (page 2) is a breakdown of NDIS Plan funding categories for our social groups and our life skills programs. Please refer to this to determine if you have funding in the appropriate support categories to access our services.
- To calculate how much funding you will need for each program per year, please use the equation below:

Price per hour x length of group session x number of sessions x number of term(s) per year (if applicable)

For example, if you attend Awesome Group using core funding, your calculation would be:
 $\$50.95 \times 2 \text{ hours} \times 10 \text{ sessions} \times 4 \text{ terms per year} = \$3,805.20$



Breakdown of NDIS Plan Funding Tree



Legend
 THMP = Telethon Holiday Makers Program
 SIS = Step into Social
 YES = Youth Engaging Successfully



Support Item Reference Number

Each support item has a unique reference number, according to the following structure:



For example:

01_013_0107_1_1 - Assistance with Self-Care Activities - Standard - Saturday

Support Category	Sequence Number	Registration Group	Outcome Domain	Support Purpose
01	013	0107	1	1

All NDIS Registration Groups

Registration Groups

Each support item specifies the Registration Group for which a Registered Provider who delivers the support must be registered with the NDIS Quality and Safeguards Commission. There are currently 36 Registration Groups.

Registration Group	
Number	Name
General Registration Groups	
0101	Accommodation / Tenancy Assistance
0102	Assistance to Access and Maintain Employment or Higher Education
0104	High Intensity Daily Personal Activities
0106	Assistance in Coordinating or Managing Life Stages, Transitions And Supports
0107	Daily Personal Activities
0108	Assistance with Travel/Transport Arrangements
0115	Assistance with Daily Life Tasks in a Group or Shared Living Arrangement
0116	Innovative Community Participation
0117	Development of Daily Living and Life Skills
0120	Household Tasks
0125	Participation in Community, Social and Civic Activities
0127	Management of Funding for Supports in Participants' Plans
0129	Specialised Driver Training
0130	Assistance Animals
0131	Specialised Disability Accommodation
0133	Specialised Supported Employment
0136	Group and Centre Based Activities
Professional Registration Groups	
0110	Specialist Positive Behaviour Support
0114	Community Nursing Care
0118	Early Intervention Supports for Early Childhood
0119	Specialised Hearing Services
0121	Interpreting and Translation
0126	Exercise Physiology and Personal Training
0128	Therapeutic Supports
0132	Specialised Support Coordination
0134	Hearing Services
0135	Customised Prosthetics
Home and Vehicle Modification registration Groups	
0109	Vehicle Modifications
0111	Home Modifications
Assistive Technology and Equipment Registration Groups	
0103	Assistive Products for Personal Care and Safety
0105	Personal Mobility Equipment
0112	Assistive Equipment for Recreation
0113	Vision Equipment
0122	Hearing Equipment
0123	Assistive Products for Household Tasks
0124	Communication and Information Equipment

Spectrum Space | 2 Alma St, Fremantle WA 6160

(08) 9431 2111 | info@spectrumspace.org.au | spectrumspace.org.au



Support Item Reference Numbers applicable to Spectrum Space (in green)

Support Category	Sequence number	Registration group (refer to table below)	Outcome domain	Support Purpose
01 Assistance with daily life				1 – Core
02 Transport				1 – Core
03 Consumables				1 – Core
04 Assistance with Social Economic and Community Participation		0125 Participation in community social and civic activities 0136 Group and Centre based activities		1 – Core
05 Assistive Technology				2 – Capital
06 Home Mods and SDAs				2 – Capital
07 Support Coordination				3 – Capacity Building
08 Improved living arrangements				3 – Capacity Building
09 Increased social and community participation		0117 Development of daily living and life skills		3 – Capacity Building
10 Finding and keeping a job		0102 Assistance to access and maintain employment or higher education (awaiting registration group to be confirmed)		3 – Capacity Building
11 Improved relationships		0117 Development of daily living and life skills		3 – Capacity Building
12 Improved health and wellbeing				3 – Capacity Building
13 Improved learning				3 – Capacity Building
14 Improved life choices				3 – Capacity Building
15 Improved daily living skills				3 – Capacity Building

